

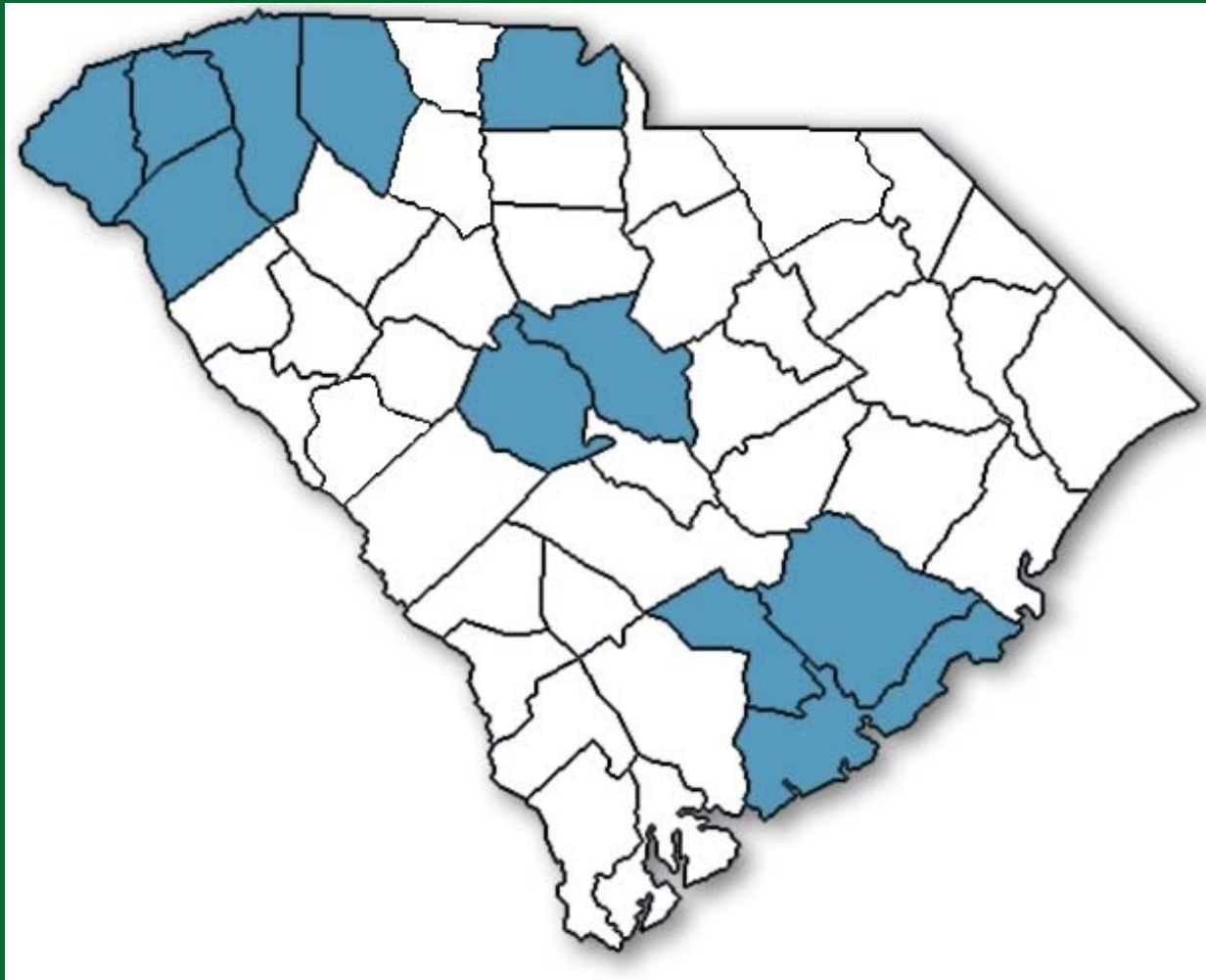


Channell Webster  
S.C. DHEC  
Bureau of Air Quality  
803-898-4372  
[webstecv@dhec.sc.gov](mailto:webstecv@dhec.sc.gov)

# What is the LME Program?

- Residents trade in their gas-powered mower for a discount towards the purchase of an environmentally-friendly mower.
- Gas-powered mowers collected at the event are recycled.

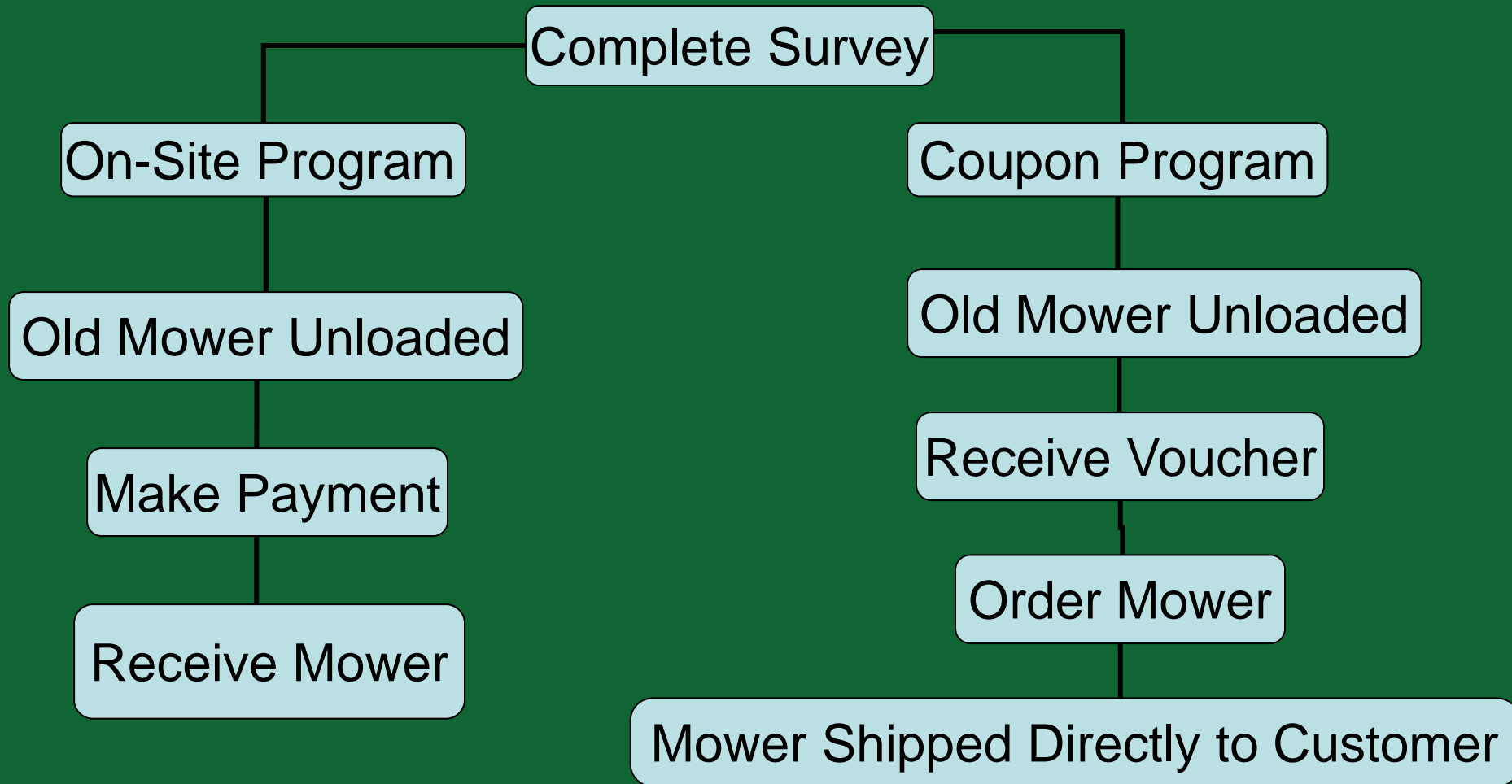
# Currently in South Carolina...



# Key Elements

- Suitable site
- Equipment provider
- Publicity
- Volunteers
- Mower Disposal
- Funding

# Day of the Event



# 2011 Participating Manufacturers

- Neuton
- Black & Decker
- Reel Mowers, Etc.
- The Greenstation
- C Enterprises

# Typical Timeline

- Organize a committee (Sept.)
- Formulate budget (Oct.-Dec.)
- Select Vendor(s) (Jan.)
- Plan the Event (Jan.-Mar.)
- Host Event (Mar.-May)
- Post Event meeting (Jun.)

# LAWN MOWER EXCHANGE Program



Channell Webster  
S.C. DHEC  
Bureau of Air Quality  
803-898-4372  
[webstecv@dhec.sc.gov](mailto:webstecv@dhec.sc.gov)